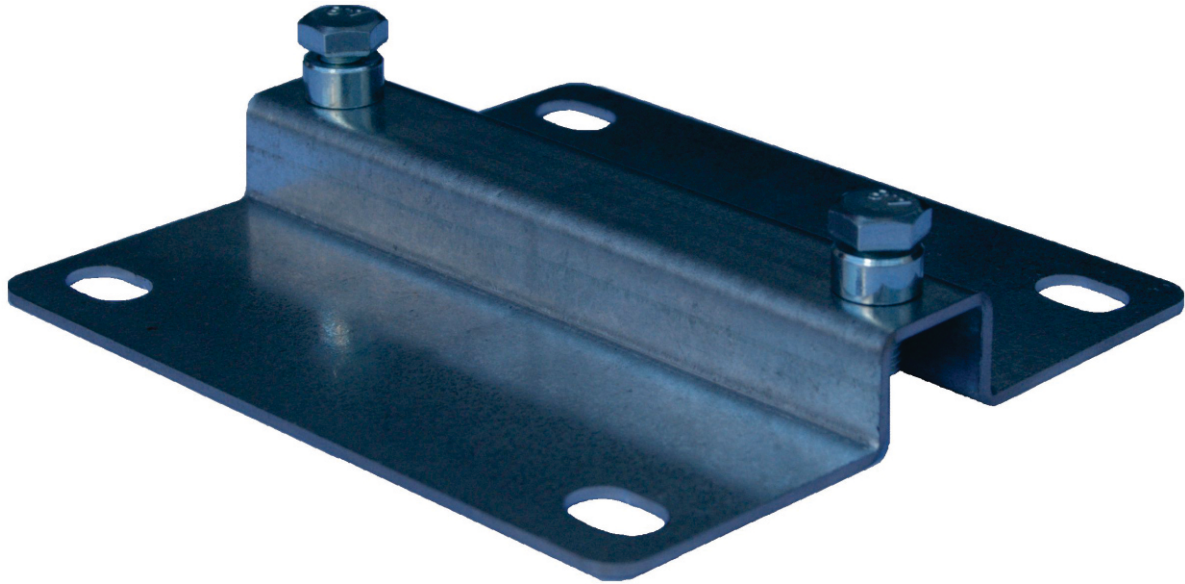


## BUGGY WHIP BRACKET



### PRODUCT DESCRIPTION

- Metal buggy whip bracket.

### TECHNICAL SPECIFICATIONS

- 1.6mm mild steel.
- Galvanised finish.
- 16mm central channel with 2x M6 press studs.
- 2x M6 x 16mm bolts.
- 4x 8mm x 12mm fastening slots.
- 100mm x 150mm x 20mm x 160g
- Designed for 13mm fibreglass buggy whip pole.

### INSTRUCTIONS FOR USE

Secure the bracket to a rigid and accessible vertical surface using M8 bolts and nuts. Screw the bottom M6 bolt all the way in. Insert the buggy whip pole into the bracket. Screw the top bolt in until it has locked the pole into position. It is recommended that a locking solution/tape be used on the M6 bolts for securing the pole into the bracket.

### WARNING

The bracket is only designed to be used with a 13mm fibreglass pole. Use the correct fasteners to secure bracket. To avoid damaging any surfaces, use a buffer/cushioning layer between bracket and mounting surface. Should you be uncertain of the buggy whip brackets' application, please consult your safety officer or manufacturer.